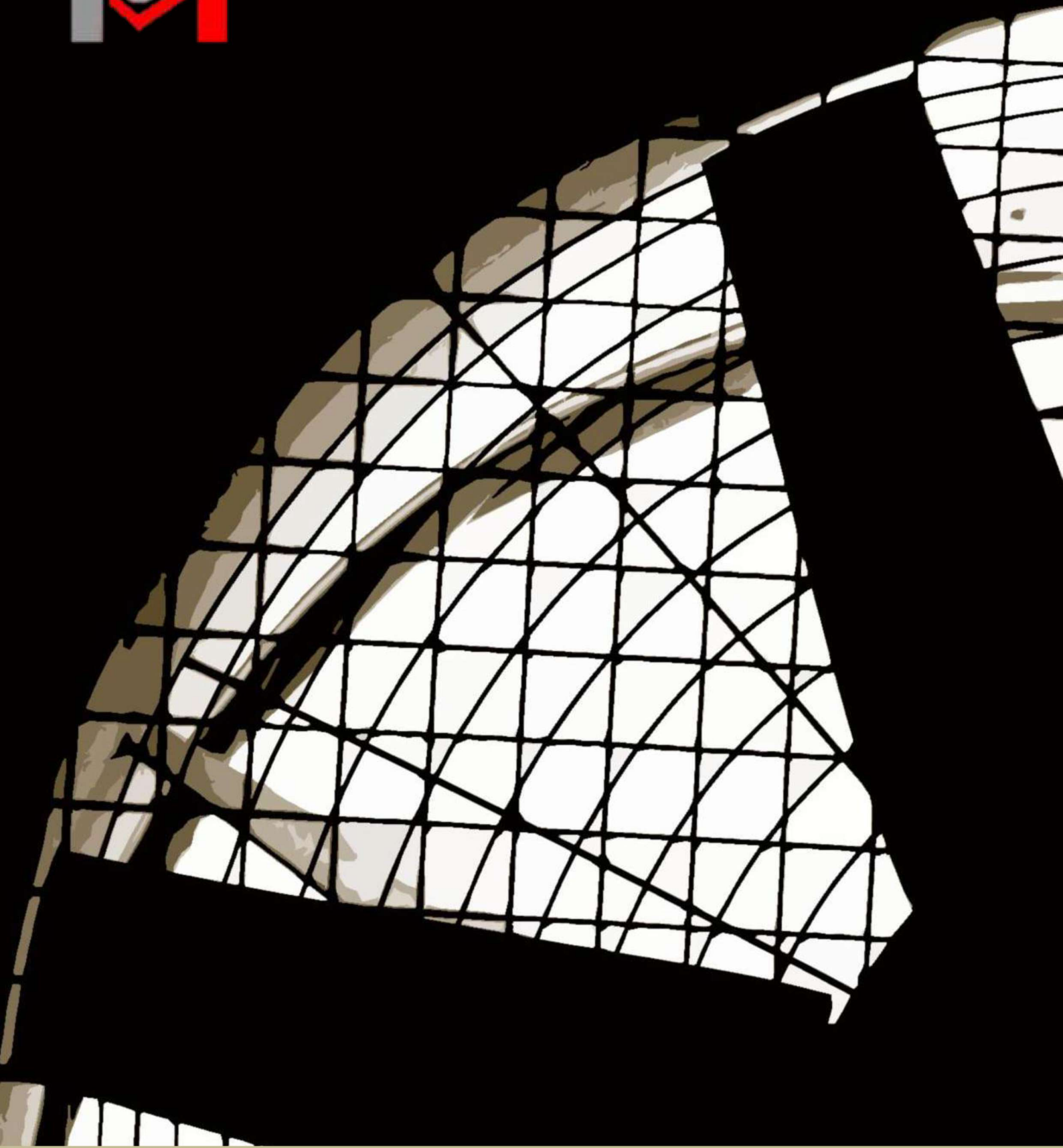


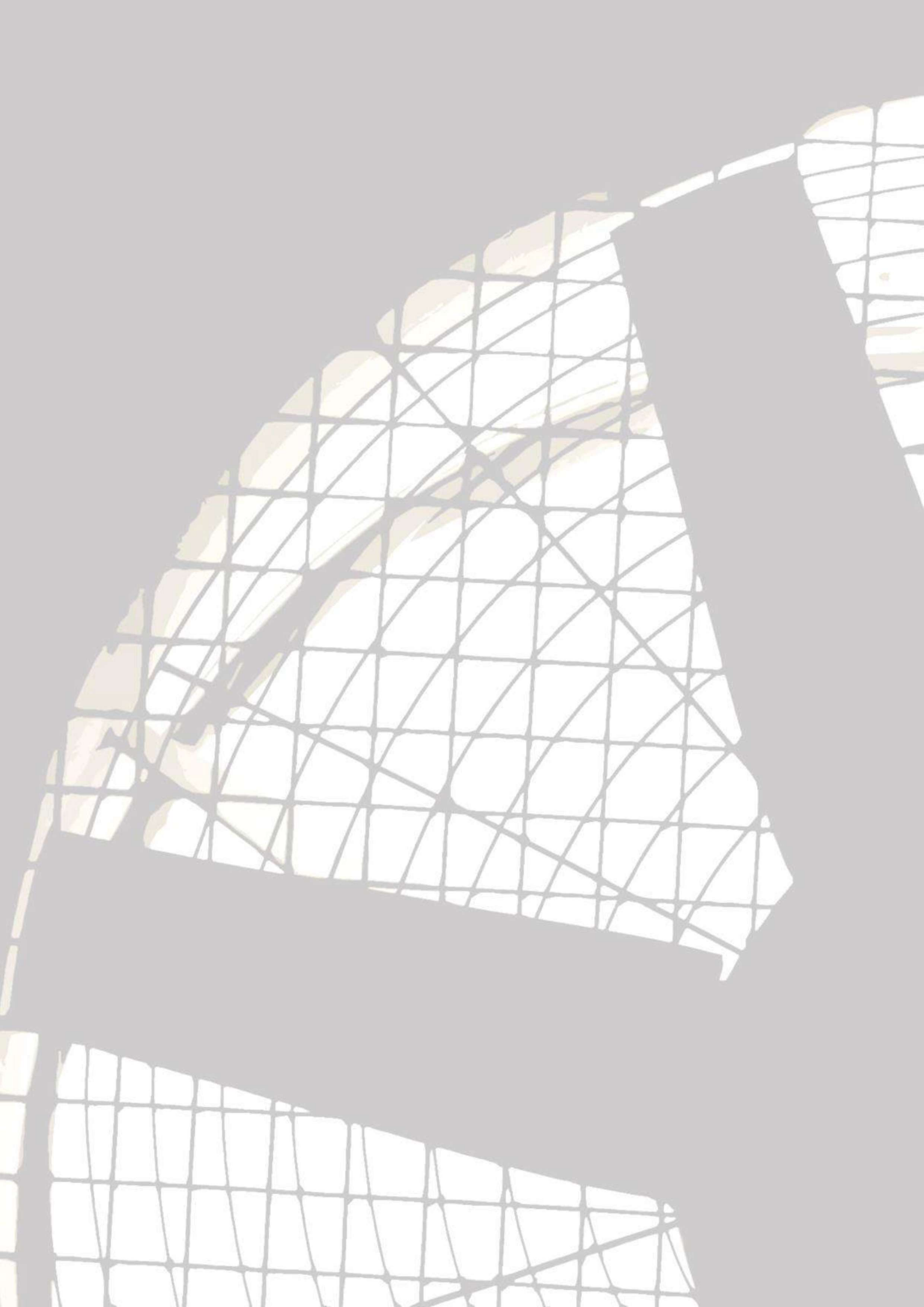


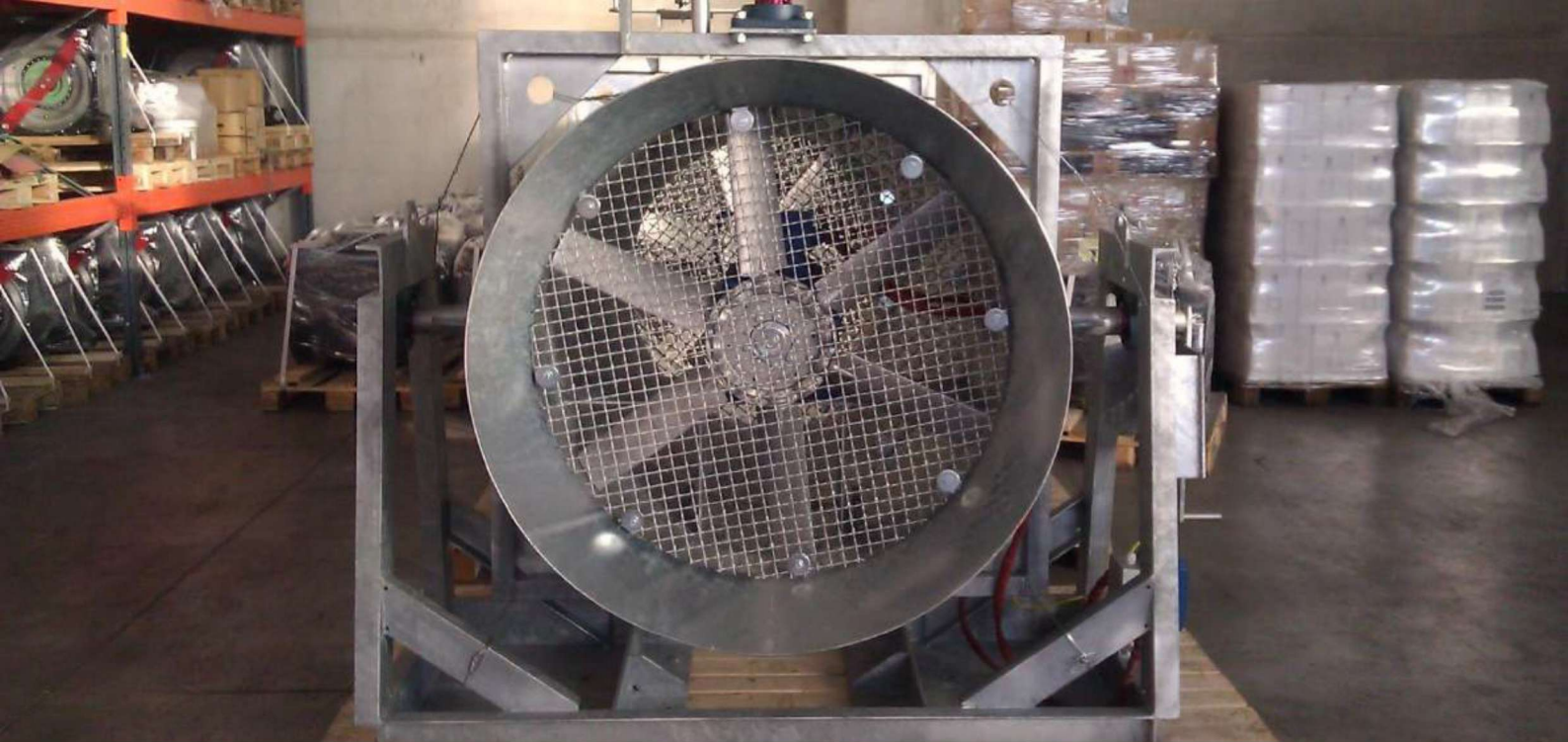
PT. INDOMULTI MITRA MANDIRI



▪ HEAVY DUTY FAN

▪ VENTILATION





PRAKATA

Puji syukur ke hadirat Tuhan Yang Mahakuasa seiring kemajuan dan perkembangan banyak aspek dalam kehidupan masyarakat, kami ingin berperan aktif untuk ikut menjawab tantangan akan pemenuhan kebutuhan banyak pihak khususnya pada bidang Industrial Fan.

Untuk itu dengan rendah hati, perkenankan kami menyajikan sekelumit informasi mengenai kami sebagai langkah awal kami memperkenalkan diri.

Besar harapan kami profil perusahaan ini cukup informatif, akan dapat dijadikan bahan pertimbangan untuk mengambil keputusan dan menjadikan kami sebagai mitra kerja dalam memenuhi kebutuhan perusahaan Anda di bidang industri.

Kini, kami siap melangkah yang diwarnai dengan inovasi, integritas, optimisme serta komitmen untuk memberikan yang terbaik.

Hormat Kami,



VISI

Menjadi perusahaan terunggul dalam peranannya memenuhi kebutuhan masyarakat dalam bidang fan.

MISI

- Pemenuhan kepuasan pelanggan menjadi tujuan utama.
- Produk berkualitas, pelayanan prima, komitmen tinggi, dan professional menjadi prinsip dasar.
- Menjadikan banyak pihak sebagai mitra dan asset yang sangat bernilai.



LANDASAN HUKUM

Keputusan Menteri Hukum dan Hak Asasi Manusia Republik Indonesia
Nomor AHU0051177.AH.01.01. Tahun 2016
Tentang
Pengesahan Pendirian Badan Hukum Perseroan Terbatas

Surat Izin Perdagangan (SIUP)
Nomor: 503/03702-BPMPTSP/30-03/PK/XII/2016

Tanda Daftar Perusahaan (TDP)
Nomor: 30,03,1,47,17863

Nomor Pokok Wajib Pajak (NPWP)
Nomor: 03.210.047.1-044.000



SEJARAH

Dengan latar belakang pendidikan dan pengalaman kerja yang dimiliki, pada tanggal 8 November 1993 di Bandar Lampung dua kakak beradik Ir. Liliana dan Ir. Susanto Wijaya memulai berwirausaha dalam bidang mekanikal dan elektrik dengan mendirikan **PT. Sumber Makmur Adiprayoga** dihadapan Notaris Djoni, SH dengan akta pendirian no. 82.

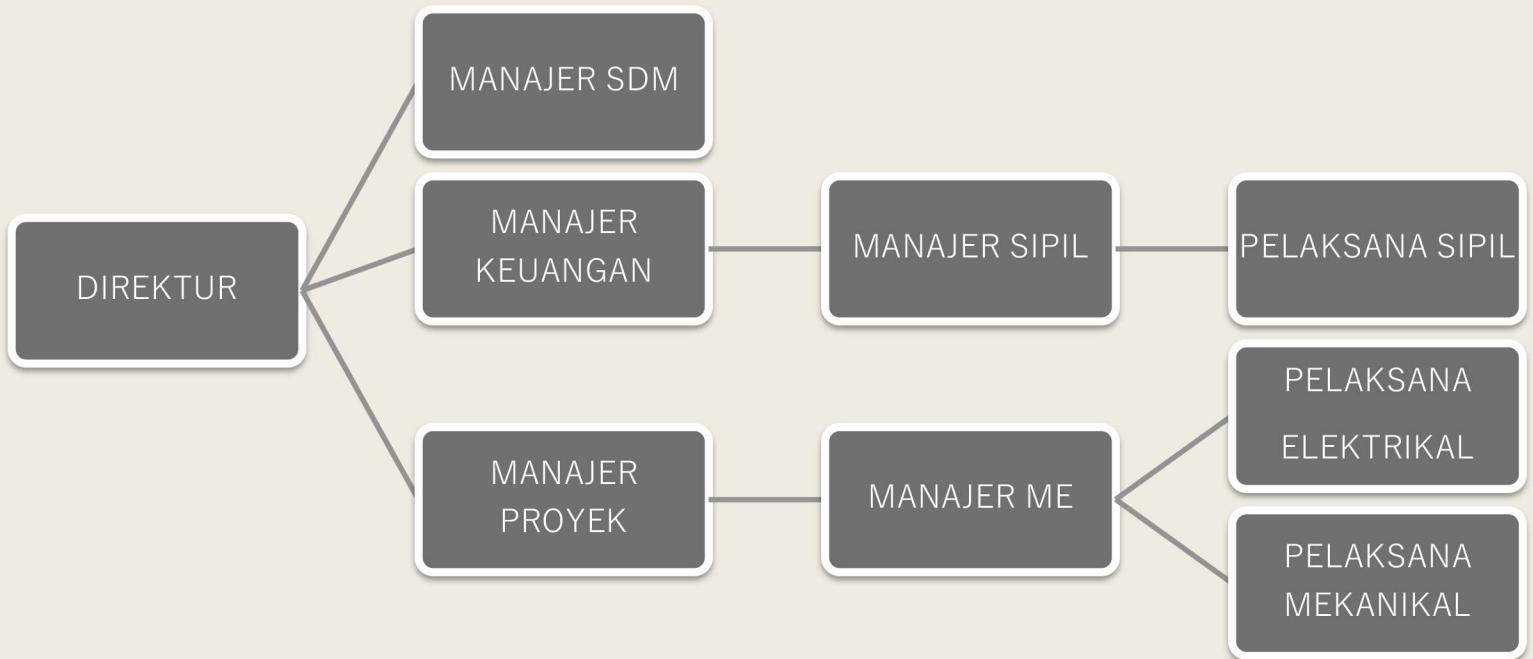
Berkat kemurahan Tuhan Yang Maha Kuasa usaha yang dirintis lebih dari dua dasawarsa lalu tersebut dapat terus dan telah berkembang menjadi sebuah usaha **SUMBER MAKMUR** group.

Pada tanggal 05 Mei 2017 didirikan di Jakarta guna memperkuat kinerja **SUMBER MAKMUR** Group.

Para profesional telah bergabung dengan jajaran direksi melengkapi manajemen dalam menjawab tantangan mewujudkan visi perusahaan dengan menjabarkan dan menerapkan misi yang telah ditetapkan.



STRUKTUR ORGANISASI





KONTAK KAMI

PT. Indomulti Mitra Mandiri
Jl. Scientia Boulevard Dalton 003 Medang, Pagedangan –
Tangerang, Banten
Phone : (021) 2941-9039
Fax : (021) 2941-9087
Email : indomulti.imm@gmail.com

Lisanto : 0813 8533 1968

KATALOG BARANG

AXIAL FAN



AFBD Series



AFDD Series

Blade with perfect performance and beautiful shape.

The aluminium blade angle can be adjusted steplessly when the impeller is static.

Widely used for the ventilation of industrial, mining enterprise, civil building and entertainment.

The range is from 12" to 48"
Max air volume: 185300 m³/hour,
Total pressure: 1000 Pa



AFDBB Series



AFRF Series

KATALOG BARANG

AXIAL FAN



AFBD Series



AFDD Series



AFDBB Series

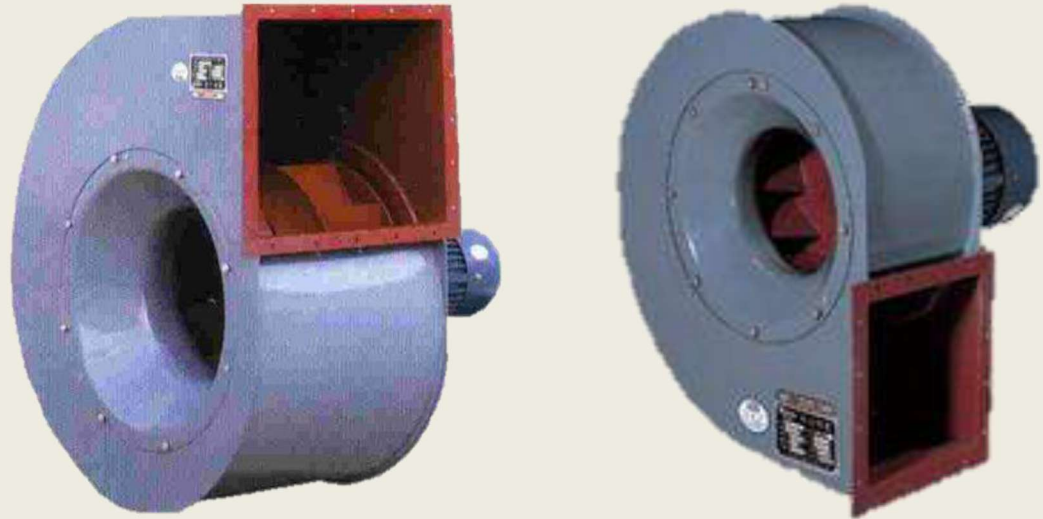


AFRF Series

HEAVY DUTY AXIAL FAN SPECS & SIZE TABLE				
Diameter (inch/mm)	Capacity (CFM)	St. Pressure (inWg)	Speed (R.P.M)	Power (HP)
12"/300	2	1"	3	1
	1	0.15"	1	¼
15"/375	4	1"	3	2
	3	1"	3	1
	2	0.15"	1	1/3
	2	0.15"	1	¼
16"/400	3	0.2"	1	1
	3	0.5"	3	2
	4	0.8"	3	3
	5	0.8"	3	4
18"/450	5	1"	3	2
	6	1"	3	3
	8	1"	3	4
	4	0.5"	1	1
	3	0.5"	1	½
19"/475	6	1"	3	3
	7	1"	3	4
	9	1"	3	5
	4	0.5"	1	1
20"/500	5	0.4"	1	1 ½
	4	2"	3	3
	7	2"	3	5
21"/525	5	1"	3	3
	8	1"	3	5
	13	1"	3	10
	6	0.5"	1	2
24"/600	10	1.5"	3	5 ½
	13	1.5"	3	10
	16	1.5"	3	15
	20	1.5"	3	20
	7	1"	1	2
	8	1"	1	3
27"/675	9	1"	1	3
	12	1"	1	5 ½
	8	0.5"	1440	3
28"/710	14	1"	1	5
	8	1"	1	3
	11	0,4	960	2
30"/750	13	1"	1	5
	16	1"	1	7 ½
	11	0.5"	960	3
32"/800	17	1"	1440	7,5
	22	1"	1440	15
	15	0,6	960	6
36"/900	13	1"	1	5
	20	1"	1	10
	33	1"	1	20
	17	1"	960	7 ½
42"/1050	21	1"	1	10
	27	1"	1	15
	32	1"	1	20
	14	1"	960	5
	21	1"	960	7 ½
	30	1"	960	15
48"/1200	24	1"	960	7 ½
	36	1"	960	15
	18	1"	720	5
	25	1"	720	7 ½
	30	1"	720	10

KATALOG BARANG

CENTRIFUGAL FAN



Centrifugal 4-72 SERIES

Its a middle pressure and large flow centrifugal fan.

The impeller is consisted of airplane like backward blade, cone-curved front plane and flat rear plate. It has high efficiency, low noise and strong and long service life.

It is used for the air conveyance of air-condition systems in the factories, hotels, and restauarans, kitchen air-exhausting and the ventilation, cooling and dirt-extraction of basement, cinema, meeting-room, stadium and other large building.

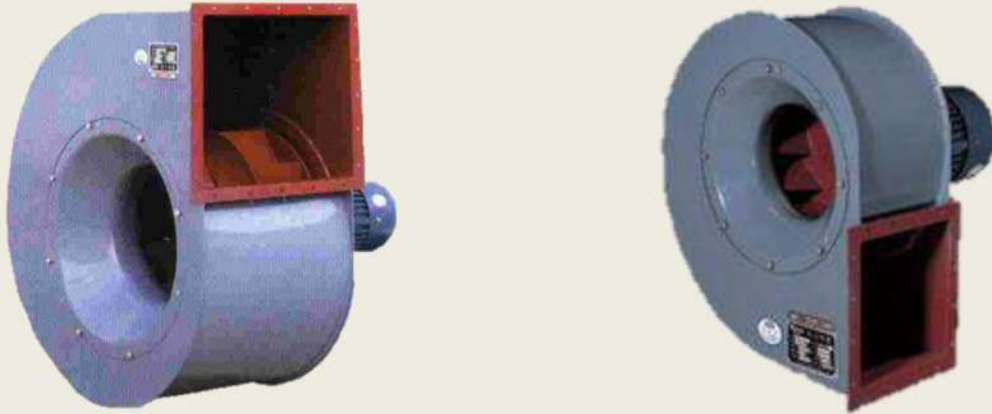
Air Volume : 844 - 75552 m³/h

Total Pressure : 198 - 2746 Pa

KATALOG BARANG

CENTRIFUGAL FAN TURBO

SPECIFICATION, SIZE, & PRICELIST



Centrifugal 4-72 SERIES

TCF # 2,8 A		
POWER 1500W 2P		
CMH	PASCAL	Kw
1131	994	0,67
1310	966	0,70
1480	933	0,71
1659	887	0,74
1828	835	0,77
2007	770	0,79
2177	702	0,81
2356	606	0,8

TCF # 3,2 A		
POWER 2200 W 2P		
CMH	PASCAL	Kw
1688	1300	1,23
1955	1263	1,31
2209	1220	1,38
2476	1160	1,34
2729	1091	1,39
2996	1006	1,43
3250	918	1,47
3517	792	1,45

TCF # 3,6 A		
POWER 3000 W 2P		
CMH	PASCAL	Kw
2664	1578	2,03
3045	1531	2,15
3405	1481	2,25
3786	1419	2,35
4146	1343	2,42
4527	1256	2,5
4887	1144	2,53
5268	989	2,52

TCF # 4,0 A		
POWER 5500 W 2P		
CMH	PASCAL	Kw
4012	2014	3,47
4506	1969	3,66
4973	1915	3,82
5468	1830	3,94
5962	1723	4,02
6457	1606	4,11
6924	1459	4,11
7419	1320	4,19

TCF # 4,5 A		
POWER 7500W 2P		
CMH	PASCAL	Kw
5712	2554	6
6416	2497	6,32
7081	2428	6,6
7785	2320	6,81
8489	2184	6,95
9194	2036	7,09
9859	1849	7,1
10562	1673	7,24

TCF # 6,0 A		
POWER 4000W 4P		
CMH	PASCAL	Kw
6677	1139	3,25
7650	1124	3,49
8578	1099	3,7
9551	1059	3,91
10478	999	4,04
11452	919	4,13
12379	836	4,19
13353	724	4,14

TCF # 5,0 A		
POWER 15000W 2P		
CMH	PASCAL	Kw
7728	3187	10,02
8855	3145	10,76
9928	3074	11,39
11054	2962	12,04
12128	2792	12,44
13255	2567	12,72
14328	2335	12,9
15455	2019	12,75

KATALOG BARANG

CENTRIFUGAL FAN HIGH PRESSURE



Its an energy saving product, suitable for hi-press compulsory ventilation in trades like calcining and smelting, glass, ceramic industry, radio, electroplanting, storage battery and material transportation in processing industries like grain, forage and mineral powder etc.

The trasporing medium is air or other non-spontaneous-combustion and non-explosive-combustion air with no harm to human and no erosion to steel material.

Air Volume : 824 - 123090 m³/h
Total Pressure : 3000 - 16250 Pa

KATALOG BARANG

CENTRIFUGAL FAN HIGH

PRESSURE SPECIFICATION, SIZE, & PRICELIST



HCF 4 A		
POWER 2.200 W 2P		
CMH	PASCAL	In
824	3584	16"
970	3665	
1116	8647	
1264	8597	
-	-	
-	-	

HCF 4 A		
POWER 3.000 W 2P		
CMH	PASCAL	In
1410	3507	16"
1558	3884	
1704	3253	
-	-	
-	-	
-	-	

HCF 4,5 A		
POWER 4.000 W 2P		
CMH	PASCAL	In
1174	4605	18"
1397	4684	
1616	4672	
1889	4580	
2062	4447	
-	-	

HCF 4,5 A		
POWER 5.500 W 2P		
CMH	PASCAL	In
2281	4297	18"
2504	4112	
2800	4000	
.	.	
.	.	
.	.	

HCF 5 A		
POWER 11.000 W 2P		
CMH	PASCAL	In
8488	5080	20"
-	-	
-	-	
-	-	
-	-	
-	-	

HCF 5 A		
POWER 7.500 W 2P		
CMH	PASCAL	In
1610	5697	20"
1932	5768	
2264	6740	
2576	5639	
2844	5517	
8166	5323	

HCF 5,6 A		
POWER 18.500 W 2P		
CMH	PASCAL	In
3619	7109	22"
3996	6954	
4448	6709	
4901	6400	
-	-	
-	-	

Hcf 6,3 A		
POW 22 Kw 2P		
CMH	PASCAL	In
3220	9149	25"
3865	9265	
4509	9219	
5153	9055	
-	-	
-	-	

HCF 6,3 A		
POWER 30 Kw 2 P		
CMH	PASCAL	In
5690	8857	25"
6884	8543	
6978	8148	
-	-	
-	-	
-	-	

HCF 6,3 A		
POWER 37 Kw 2P		
CMH	PASCAL	In
5690	8857	25"
6884	8543	
6978	8148	
.	.	
.	.	
.	.	

KATALOG BARANG

CENTRIFUGAL AC BLOWER



22 W Motor
Dalam



300 – 320 W
Motor Luar



60 – 220 W
Motor Dalam



22 W Motor
Dalam

KATALOG BARANG

CENTRIFUGAL AC BLOWER

SPECIFICATION, SIZE, & PRICELIST



TYPE	VOLTASE AC / Volt	SPEED RPM	POWER WATT	FREQ. Hz	CURRENT A
85 FLJ2	220	2.500	22	50	0,09
130 FLJ0		2.200	60		0,3
130 FLJ1			85		0,4
130 FLJ5		2.800	120		0,55
150 FLJ4			180		1,05
150 FLJ2			220		1,05
150 FLJ6			300		1,6
150 FLJ7		2.700	320		1,6

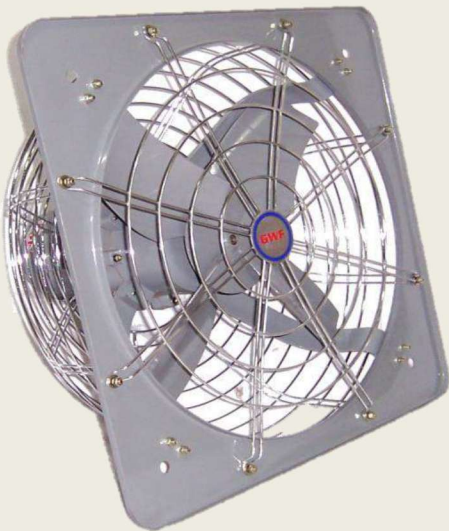
KATALOG BARANG

HEAVY DUTY INDUSTRIAL FAN



Powerfull Ventilation Fan
(Exhaust Extra Strong)

- CAD optimized design, safely working and electricity saving, working a long service life continually; Large air volume, low noise;
- 12", 14", 16", 18", 20", 24" , 30" total 7 models;
- Air Volume:2100-16200m³/h.



Exhaust Flameproof FE

- This product is suitable to the place where the spontaneous combustion temperature of the explosive mixed gas is higher than 200 °C, such as extraction and refinement of petroleum, making of various kinds of benzene, alcohol and medicine, lacquering, textile industry, drying, food processing, rubber producing, hydrogen sulphide, coke oven gas, hydrogen cyanide, carbon monoxide, diesel oil, coal oil, fuel oil, solvent petroleum, washing petroleum etc, related factory, workshop, warehouse for ventilating.
- 16" , 20" , 24" , total 3 models;
- Air volume : 2880 – 8700 m³ /h.

KATALOG BARANG

HEAVY DUTY INDUSTRIAL FAN

SPECIFICATION, SIZE, & PRICELIST



Powerfull Ventilation Fan
(Exhaust Extra Strong)



Exhaust Flameproof FE

Powerfull Ventilation Fan (Exhaust Extra Strong)

DESCRIPTION	SIZE Inch	MODEL	VOLT Phase	POWER Watt	SPEED Rpm	CAPACITY M3 / Mnt
EXTRA STRONG	12"	ES 30 S	220	100	1400	35
	14"	ES 35 S		150		50
	16"	ES 40 S/T	220/380	220		65
	18"	ES 45 S/T		380		82
	20"	ES 20 S	220	500		98
	24"	ES 60 S/T	220/380	720		200
	30"	ES 75 T	380	1100		900

Exhaust Flameproof FE

DESCRIPTION	SIZE Inch	MODEL	VOLT Phase	POWER Watt	SPEED Rpm	CAPACITY M3 / Mnt
FLAMEPROOF FAN	16"	FET 40 S/T		130		48
	20"	FET 50 S/T	220/380	300	1400	95
	24"	FET 60 S/T		600		145

KATALOG BARANG

HEAVY DUTY INDUSTRIAL FAN



Standard Fan

- The motor adopts punching shell, low-noise rolling bearing and it has a long service life;
- The structural parts adopt high-quality punching sheet steel;
- The steel is of high-quality, low weight. It's beautiful and dignified in appearance, easy to install;
- CAD optimized design;
- Large air volume, low noise and stable working;
- 8", 10", 12", 14", 16", 20", 24" total 7 models.
- Available options: with extra shutter, with extra steel grill;
- Air volume: 780-8700 m³ / h



Rectangular Luxury Fan

- Elegant design in appearance, beautiful luster;
- Light and easy to install;
- CAD optimized design, motor and also used as an elegant fitting;
- Strong air volume and stable working;
- 10", 12", 14", 16", total 4 models;
- Air volume : 900 – 3360 m³ / h



Small Propeller Fan

KATALOG BARANG

HEAVY DUTY INDUSTRIAL FAN

SPECIFICATION, SIZE, & PRICELIST



Standard Fan



Rectangular Luxury Fan



Small Propeller Fan

Small Propeller Fan

DESCRIPTION	SIZE Inch	MODEL	VOLT Phase	POWER Watt	SPEED Rpm	CAPACITY M3 / Mnt
SMALL PROPELLER FAN	8"	LAD20-4		19		8,7
	10"	FA - 25	220	30	1400	15
	12"	FA - 30		45		21
	14"	FA - 35		100		45
	16"	FA - 40		150		56

Standard Fan

DESCRIPTION	SIZE Inch	MODEL	VOLT Phase	POWER Watt	SPEED Rpm	CAPACITY M3 / Mnt
STANDARD FAN	8"	FAD 20	220	35	1400	13
	10"	FAD 25		40		14
	12"	FAD 30		55		18
	16"	FAD 40		150		48

Rectangular Luxury Fan

DESCRIPTION	SIZE Inch	MODEL	VOLT Phase	POWER Watt	SPEED Rpm	CAPACITY M3 / Mnt
RECTANGULAR LUXURY FAN	8"	LAD 20-4	220	19	1400	8,7

KATALOG BARANG

HEAVY DUTY INDUSTRIAL FAN

SPECIFICATION, SIZE, & PRICELIST



Standard Fan



Shutter Fan

Standard Fan

DESCRIPTION	SIZE Inch	MODEL	VOLT Phase	POWER Watt	SPEED Rpm	CAPACITY M3 / Mnt
STANDARD FAN	8"	FAD20	220	35	1400	13
	10"	FAD 25		40		14
	12"	FAD 30		55		18
	14"	FAD 35		75		38
	16"	FAD/S 40		150		48
	20"	FAD/S 50		350		95
	24"	FAD/S 60		600		145

Shutter Fan

DESCRIPTION	SIZE Inch	MODEL	VOLT Phase	POWER Watt	SPEED Rpm	CAPACITY M3 / Mnt
SHUTTER FAN	8"	FBD 20	220	35	1400	13
	10"	FBD 25		40		14
	12"	FBD 30		45		18
	14"	FBD 35		75		38
	16"	FBD 40		145		48
	18"	FBD 45		220		77
	20"	FBD 50		350		95

KATALOG BARANG

HEAVY DUTY INDUSTRIAL FAN

SPECIFICATION, SIZE, & PRICELIST



Wall Fan : 20- 24" Wall Fan : 26- 30"

Stand Fan : 20- 24"

Stand Fan : 26- 30"

Stand Fan

DESCRIPTION	SIZE Inch	MODEL	VOLT Phase	POWER Watt	SPEED Rpm	CAPACITY M3 / Mnt
STAND FAN	20"	DF 500 SF	220	130	1400	130
	24"	DF 600 SF		170		195
	26"	DF 650 SF		187		220
	30"	DF 750 SF		240		302

Wall Fan

DESCRIPTION	SIZE Inch	MODEL	VOLT Phase	POWER Watt	SPEED Rpm	CAPACITY M3 / Mnt
WALL FAN	20"	DF 500 WF	220	130	1400	130
	24"	DF 600 WF		170		195
	26"	DF 650 WF		187		220
	30"	DF 750 WF		240		302

KATALOG BARANG

HEAVY DUTY INDUSTRIAL FAN

SPECIFICATION, SIZE, & PRICELIST



Tornado Fan



Ceiling Fan

Tornado Fan

DESCRIPTION	SIZE Inch	MODEL	VOLT Phase	POWER Watt	SPEED Rpm	CAPACITY M3 / Mnt
TORNANDO FAN	12"	FE 30		50		41
	16"	FE 40	220	120	1400	72
	18"	FE 45		165		84
	20"	FE 50		190		96

Ceiling Fan

DESCRIPTION	SIZE Inch	MODEL	VOLT Phase	POWER Watt	SPEED Rpm	CAPACITY M3 / Mnt
CEILING FAN	18"	XDF - 45	220	90	1400	65

KATALOG BARANG

HEAVY DUTY INDUSTRIAL FAN



Ground Fan

Streamlined vane design, low noise, big air volume, and mild wind. Adjustable angle of pitch, large wind covering area. Three speeds regulation, air direction angle adjustable. Simple and easy operation | novel outlook, graceful coloring and excellent craftwork. Gear powerful overload protection. Motor over-heat self-protection for long service life and safety.

Total 1 models.



Wall Fan

Streamlined vane design, low noise, big air volume, and mild wind. Adjustable angle of pitch, large wind covering area | three speeds regulation, air direction angle adjustable. Simple and easy operation . Novel outlook, graceful coloring and excellent craftwork. Gear powerful overload protection. Motor over-heat self-protection for long service life and safety.

Total 2 models, Air volume: 78-115m³/min



Stand Fan

Streamlined vane design, low noise, big air volume, and mild wind. Adjustable angle of pitch, large wind covering area. Three speeds regulation, air direction angle adjustable. Simple and easy operation. Novel outlook, graceful coloring and excellent craftwork. Gear powerful overload protection. Motor over-heat self-protection for long service life and safety.

Total 2 models, Air volume: 78-115m³/min

KATALOG BARANG

HEAVY DUTY INDUSTRIAL FAN

SPECIFICATION, SIZE, & PRICELIST



Wall Fan



Stand Fan



Ground Fan

Ceiling Fan

DESCRIPTION	SIZE Inch	MODEL	VOLT Phase	POWER Watt	SPEED Rpm	CAPACITY M3 / Mnt
STAND FAN	18"	45 T-S	220	130	1400	115
	20"	50 T-S		145		190

Wall Fan

DESCRIPTION	SIZE Inch	MODEL	VOLT Phase	POWER Watt	SPEED Rpm	CAPACITY M3 / Mnt
WALL FAN	18"	45 T-W	220	130	1400	115
	20"	50 T-W		150		190

Ground Fan

DESCRIPTION	SIZE Inch	MODEL	VOLT Phase	POWER Watt	SPEED Rpm	CAPACITY M3 / Mnt
GROUND FAN	18"	45 T-G	220	130	1400	115

KATALOG BARANG

AXIAL FAN

SPECIFICATION, SIZE, & PRICELIST



Axial Fan Low Noise



Axial Standard Low Noise

Axial Standard Low Noise

DESCRIPTION	SIZE Inch	MODEL	VOLT Phase	POWER Watt	SPEED Rpm	CAPACITY M3 / Mnt	t. Pres (Pa)
AXIAL STANDART LOW NOISE	12"	DF 3 G 4	220	180	1400	30	100
		SF 3 G 4	380				
	14"	DF 3,5 G 4	220	370			
		SF 3,5 G 4	380				
	16"	DF 4 G 4	220	550			
		SF 4 G 4	380				
	20"	DF 5 G 4	220	750			
		SF 5 G 4	380				
	24"	SF 6 G 4	380	2200		343	294
	28"	SF 7 G 4		3000		442	313
32"	SF 8 G 4	4000		550	345		

Axial Standard Fan Low Noise

DESCRIPTION	SIZE Inch	MODEL	VOLT Phase	POWER Watt	SPEED Rpm	CAPACITY M3 / Mnt	t. Pres (Pa)
AXIAL FAN LOW NOISE	20"	ALN 5 - 2	380	1500	2800	235	350
	24"	ALN 6 - 2		3000		335	400

KATALOG BARANG

VENTILATION

SPECIFICATION, SIZE, & PRICELIST



Rectangular Fan



GLF Propeller Fan



Axial Standard Ventilating Fan

Axial Standard Ventilating Fan

DESCRIPTION	SIZE Inch	MODEL	VOLT Phase	POWER Watt	SPEED Rpm	CAPACITY M3 / Mnt	t. Pres (Pa)
AXIAL STANDART VENTILATING FAN	12"	DF 3 B 4	220	180	1400	37	68
		SF 3 B 4	380				
	14"	DF 3,5 B 4	220	210			
		SF 3,5 B 4	380				
	16"	DF 4 B 4	220	250			
		SF 4 B 4	380				
	20"	DF 5 B 4	220	370			
		SF 5 B 4	380				
	24"	DF 6 B 4	220	550			
		SF 6 B 4	380				

GLF Propeller Fan

DESCRIPTION	SIZE Inch	MODEL	VOLT Phase	POWER Watt	SPEED Rpm	CAPACITY (M3 / h)	Noise (dB)
GLF PROPELLER FAN	38"	GLF 9.5#	380	750	450	32000	60
	45"	GLF 11.2#		750	450	37000	63
	50"	GLF 12.5#		1100	450	44500	65

Rectangular Fan

DESCRIPTION	SIZE Inch	MODEL	VOLT Phase	POWER Watt	SPEED Rpm	CAPACITY M3 / Mnt	t. Pres (Pa)
RECTANGULAR FAN	24"	LF 600	380	550	650	200	70
	32"	LF 800		750	650	250	98
	36"	LF 900		550	600	383	
	40"	LF 1000		1100	540	367	

KATALOG BARANG

SPECIFICATION, SIZE, & PRICELIST



Blade Axial



Axial Fan



Siroco Fan

Axial Fan & Blade Axial

DESCRIPTION	SIZE Inch	MODEL	VOLT Phase	POWER Watt	SPEED Rpm	CAPACITY M3 / Mnt	t. Pres (Pa)
AXIAL FAN	15"	KT 380-4S	380	750	1400	56	100
		KT 380-2S		1500	2800	106	250
	19"	KT 480-4S		1500	1400	109	145
		KT 480-2S		3000	2800	179	260
	24"	KT 610-4S		2200	1400	232	190
		KT 610-2S		7500	2800	327	476
BLADE AXIAL	15"	KT 380					
	19"	KT 480					
	24"	KT 610					

Siroco Fan

DESCRIPTION	SIZE Inch	MODEL	VOLT Phase	POWER Watt	SPEED Rpm	CAPACITY M3 / Mnt	t. Pres (Pa)
SIROCO FAN		SF 2 - A1	220	1100	2800	42	1128
		SF 2 - A2	380	1100			
		SF 2 - A3	220	180	1400	19	343
		SF 2,5 - A1	220	2200	2800	105	1471
		SF 2,5 - A2	380	2200			

KATALOG BARANG

SPECIFICATION, SIZE, & PRICELIST



Siroco Besi
Vanbel



Siroco Besi L.B

Siroco Fan Besi

DESCRIPTION	SIZE Inch	MODEL	VOLT Phase	POWER Watt	SPEED Rpm	CAPACITY M3 / Mnt	t. Pres (Pa)
SIROCO FAN BESI	5"	SF 1/4-2P1	220	0,25	2800	14	3"
		SF 1/2-2P1		0,5		20	4"
		SF 1-2P1		1		30	5"
	6"	SF 1-4P1	380	1	1400	45	2"
		SF 2-2P3		2	2800	48	5"
		SF 2-4P3		2	1400	70	2,5"
	8"	SF 3-2P3	380	3	2800	60	6"
		SF 3-4P3		3	1400	105	3"
		SF 5,5-4P3		5,5		135	3"

KATALOG BARANG

SPECIFICATION, SIZE, & PRICELIST



Daun Backward
Single Impeller



Daun Siroco Forward
Single Impeller

Daun Siroco Forward Single Impeller

DESCRIPTION	MODEL	AS/SIZE (mm/Inch)
FORWARD SINGLE IMPELLER DAUN SIROCO (R)	DTC 7-4 SW	16/8"
	DTC 8-4 SW	19/9"
	DTC 9-4 SW	16/10"
	DTC 9-4 SW	19/10"
	DTC 9-4 SW	24/10"
	DTC 10-5 SW	24/11"
	DTC 12-6 SW	28/12,75"
	DTC 15-7 SW	38/15"
	DTC 18-8 SW	38/18"
	DTC 20-8 SW	40/20"
	DTC 22-9 SW	40/22"
	DTC 24-10 SW	50/25"

Daun Backward Single Impeller

DESCRIPTION	SIZE (mm)	AS (mm)
BACKWARD SINGLE IMPELLER DAUN BACKWARD (L)	315	19
	315	28
	355	28
	400	19
	400	28
	450	38
	500	42
	560	42
	630	28
	710	42
	800	50
	900	55
	1.000	55
1.200	65	

KATALOG BARANG

PORTABLE FAN



The ventilation Fan adopts die-cast aluminium alloy blade with gradual twisted airfoil cross section. It features high wind flow and wind pressure. The motor housing adopts aluminium alloy structure, which favors heat elimination and reduction of the overall weight of the machine. The fan can be equipped with two kinds of foot rests, one is the fixed rest and the other is the movable rest. The fan is also equipped with fire retardant flexible tube, with two kinds of length, namely 5m and 10m. The fan is portable type, which can be easily moved.

- Models range : from PV200 to PV450
- Air volume : 1500 - 7500 m³/h
- Total pressure : 245 - 520 Pa

KATALOG BARANG

PORTABLE FAN

SPECIFICATION, SIZE, & PRICELIST



Portable Fan With Hose 5 Meter & 10 Meter

DESCRIPTION	SIZE Inch	MODEL	VOLT Phase	POWER Watt	SPEED Rpm	CAPACITY M3/Mnt	St. Press (Pa)
PORTABLE FAN HOSE 5M	8"	PFS 20 S	220	230	2800	25	245
	10"	PFS 25 S		320		43	294
	12"	PFS 30 SF		520		60	343
	12"	PFS 30 S		520		65	373
	14"	PFS 30 S		750		82	598
	16"	PFS40 S		1100		96	700
	18"	PFS45 S		1500		162	972
	20"	PFS 50 S		2000		200	1050
	24"	PFS 60 S	220/380	2200	1400	290	1100
PORTABLE FAN HOSE 10M	8"	PFS 20 S	220	230	2800	25	245
	10"	PFS 25 S		320		43	294
	12"	PFS 30 S		520		60	343
	12"	PFS 30 S		520		60	343
	14"	PFS 35 S		700		82	598
	16"	PFS40 S		1100		96	700
	18"	PFS45 S		1500		162	972
	20"	PFS 50 S		2000		200	1050
	24"	PFS 60 S	220/380	2200	1400	290	1100

Portable Fan Only

DESCRIPTION	SIZE Inch	MODEL	VOLT Phase	POWER Watt	SPEED Rpm	CAPACITY M3/Mnt	St. Press (Pa)
PORTABLE FAN ONLY	8"	PFS 20 S	220	230	2800	25	245
	10"	PFS 25 S		320		43	294
	12"	PFS 30 S		520		60	343
	14"	PFS 35 S		750		82	598
	16"	PFS40 S		1100		96	700
	18"	PFS45 S		1500		162	972
	20"	PFS 50 S		2000		200	1050
	24"	PFS 60 S	220/380	2200	1400	290	1100
	10"	PFS IOSF	220	320	2800	43	294
	12"	PFS12SF	220	520		60	343

KATALOG BARANG

PORTABLE FAN

SPECIFICATION, SIZE, & PRICELIST



Hoses 5 Meter & 10 Meter

DESCRIPTION	SIZE	MODEL
HOSE 5 MTR	8"	PFS 20 S
	10"	PFS 25 S
	12"	PFS 30 S
	14"	PFS 35 S
	16"	PFS40 S
	18"	PFS45 S
	20"	PFS 50 S
	24"	PFS 60 S
HOSE 10 MTR	8"	PFS20 S
	10"	PFS 25 S
	12"	PFS 30 S
	14"	PFS 35 S
	16"	PFS40 S
	18"	PFS45 S
	20"	PFS 50 S
	24"	PFS 60 S
IMPELER	8"	600,000
	10"	800,000
	12"	1200,000
	14"	1300,000
	16"	1500,000
	18"	2,000,000
	20"	2,400,000
	24"	3,100,000